

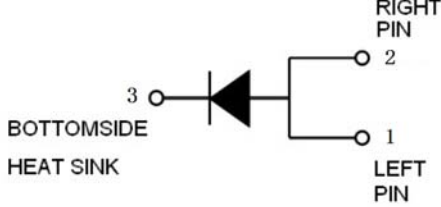


<p><b>SB2060L</b></p> <p><b>Features:</b></p> <ul style="list-style-type: none"> <li><input type="checkbox"/> High current capacity, low forward voltage.</li> <li><input type="checkbox"/> Excellent high temperature stability.</li> <li><input type="checkbox"/> Low power loss, high efficiency</li> <li><input type="checkbox"/> High forward surge capacity.</li> <li><input type="checkbox"/> RoHS compliant, and Halogen free.</li> </ul>	<p>TO-277</p>   
---	---

**Absolute Maximum Ratings** (Ta=25°C unless otherwise noted)

Characteristic	Symbol	Test Condition	Min.	Typ.	Max.	Unit
Recurrent Peak Reverse Voltage	V <sub>RRM</sub>	I <sub>R</sub> =0.5mA	60	-	-	V
Average Forward Current	I <sub>F(AV)</sub>	V <sub>R</sub> =60V@T <sub>j</sub> =25°C	-	20	-	A
Peak Forward Surge Current, 8.3ms single half sine-wave	I <sub>FSM</sub>	V <sub>R</sub> =60V@T <sub>j</sub> =25°C	-	-	200	A
Forward Voltage(Note1)	V <sub>F</sub>	I <sub>F</sub> =20A	-	-	0.59	V
Reverse Leakage Current(Note1)	I <sub>R</sub>	V <sub>R</sub> =60V@T <sub>j</sub> =25°C	-	-	0.14	mA
		V <sub>R</sub> =60V@T <sub>j</sub> =100°C	-	-	20	
Operating Junction Temperature	T <sub>j</sub>	-	-	-	150	°C
Storage Temperature Range	T <sub>stg</sub>	-	-40	-	150	
Thermal Resistance(Note2)	R <sub>th(JA)</sub>	-	-	31	-	°C/W

Note 1: Pulse test width PW=300usec. 1%duty cycle

Note 2: Polymide PCB, 2oz. copper. Cathode pad dimensions 18.8\*14.4mm. Anode pad dimensions 5.6\*14.1mm

Typical Characteristics

RATING AND CHARACTERISTIC CURVES

FIG. 1- FORWARD CURRENT DERATING CURVE

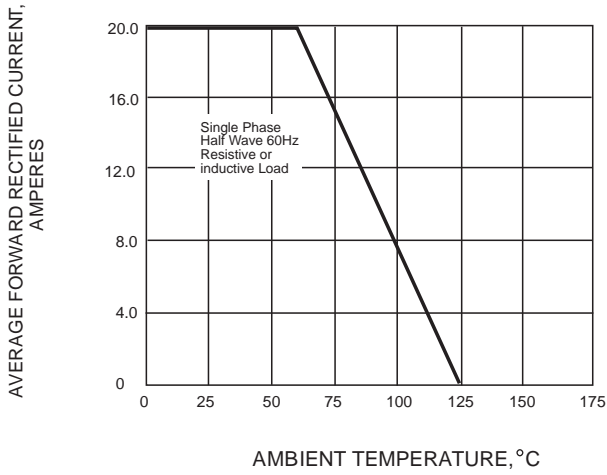


FIG. 2-MAXIMUM NON-REPETITIVE PEAK FORWARD SURGE CURRENT

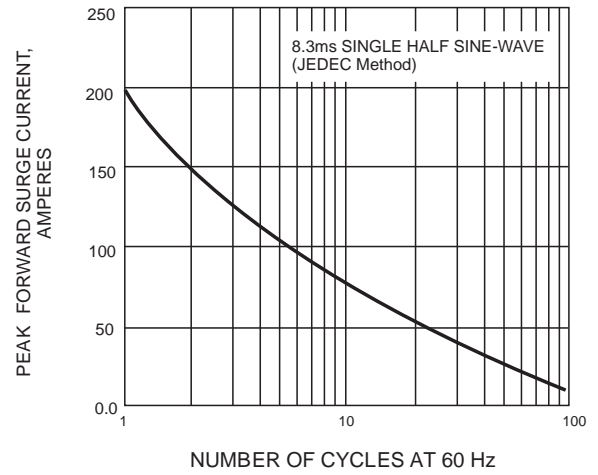


FIG. 3-TYPICAL INSTANTANEOUS FORWARD CHARACTERISTICS

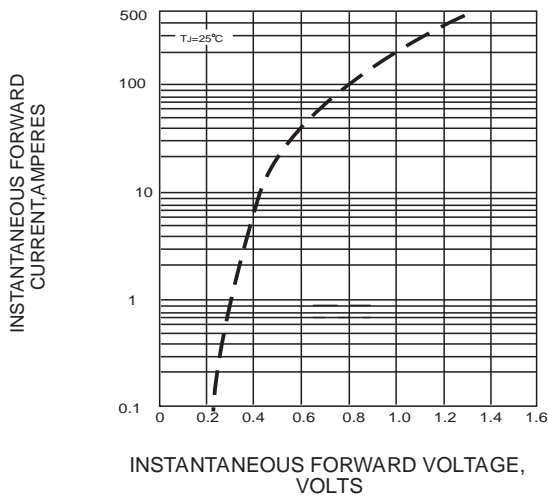
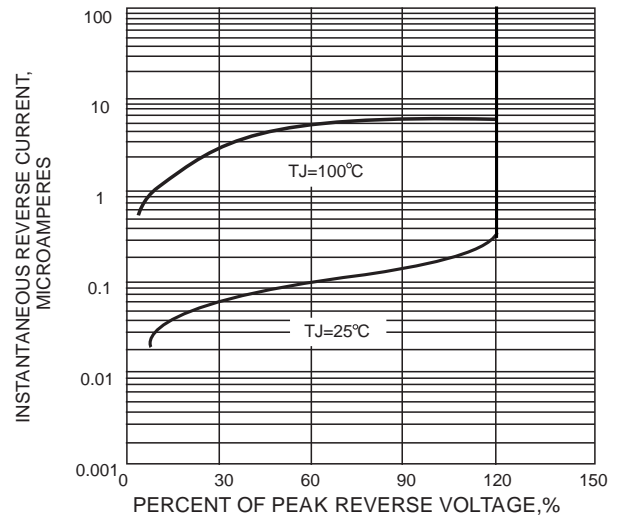


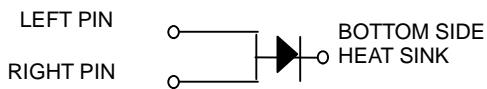
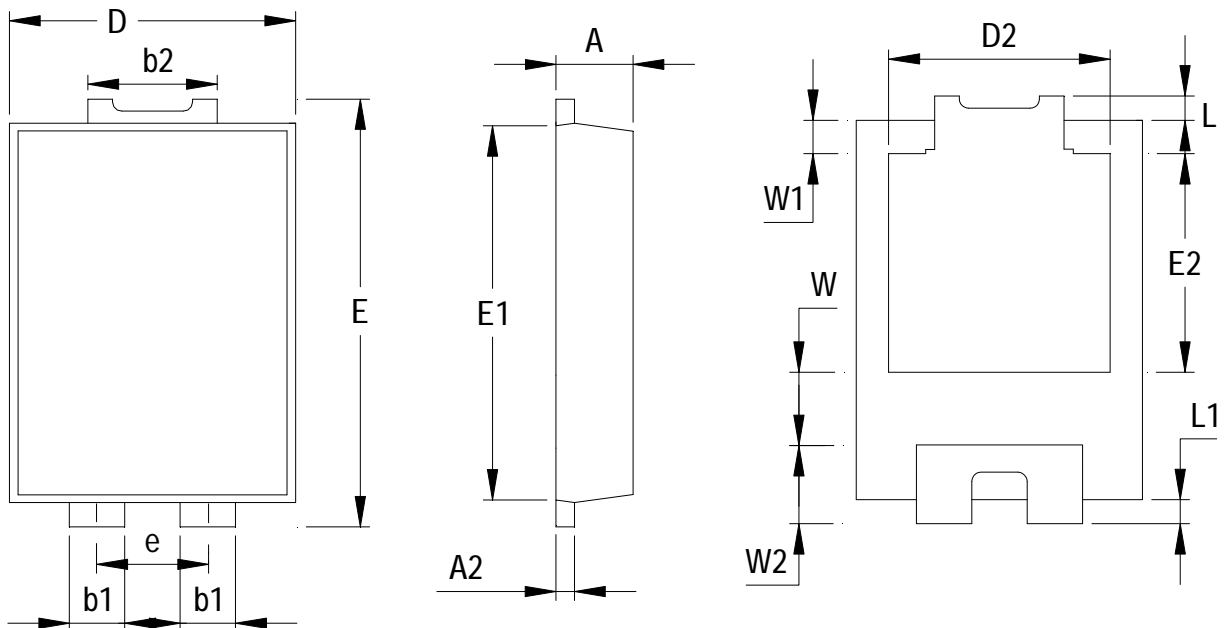
FIG. 4-TYPICAL REVERSE CHARACTERISTICS



**Package Dimension**

TO-277

Units: mm



NO	Dimensions	NO	Dimensions
A	1.25±0.05	e	1.8Typ
A2	0.30±0.02	E1	6.25±0.05
b1	0.9±0.05	E2	3.6±0.2
b2	2.1±0.05	L/L1	0.4±0.05
D	4.65±0.05	W	1.2±0.2
D2	3.60Typ	W1	0.55±0.15
E	7.05±0.1	W2	1.3±0.2
<b>All Dimensions in mm</b>			